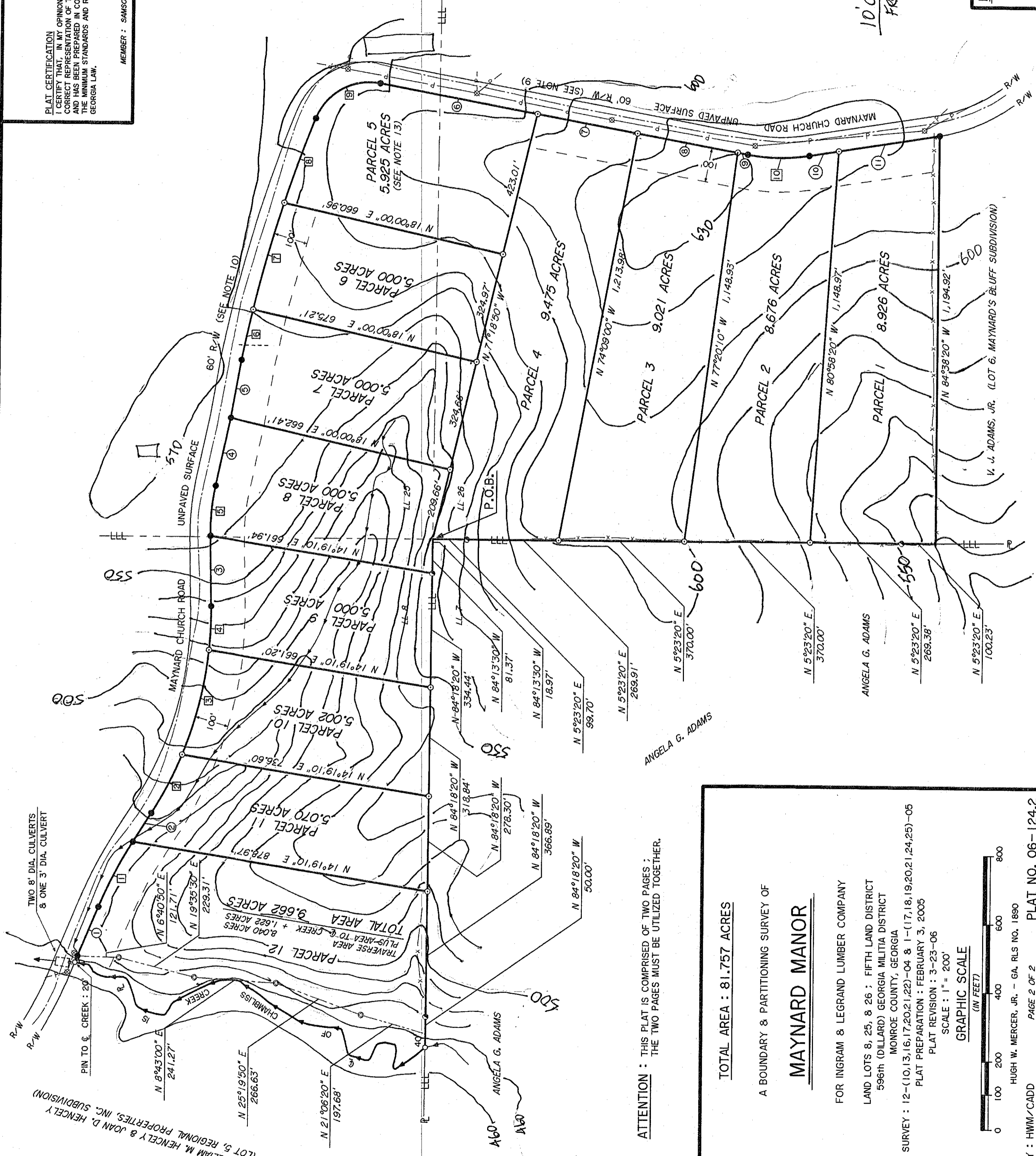
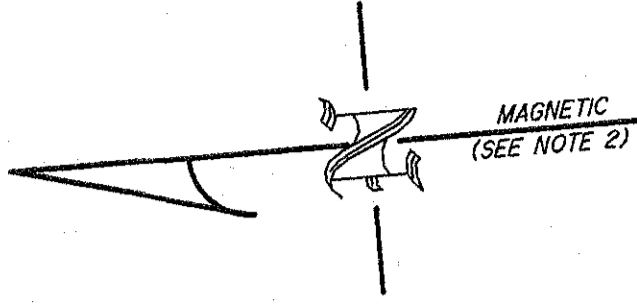




PLAT CERTIFICATION
 I CERTIFY THAT, IN MY OPINION, THIS PLAT IS A
 CORRECT REPRESENTATION OF THE LAND PLATTED
 AND HAS BEEN PREPARED IN CONFORMITY WITH
 THE MINIMUM STANDARDS AND REQUIREMENTS OF
 GEORGIA LAW.

MEMBER : SAMSOG



WILLIAM M. HENCELY & JOAN D. HENCELY
 (LOT 5, REGIONAL PROPERTIES, INC. SUBDIVISION)

TWO 8" DIA. CULVERTS
 & ONE 3" DIA. CULVERT

PIN TO CREEK : 20'

CHAMBLISS CREEK

UNPAVED SURFACE

MAYNARD CHURCH ROAD

UNPAVED SURFACE

60' R/W (SEE NOTE 10)

60' R/W (SEE NOTE 9)

MAYNARD CHURCH ROAD

UNPAVED SURFACE

60' R/W (SEE NOTE 9)

60' R/W

60' R/W

60' R/W

60' R/W

60' R/W

60' R/W

60' R/W

60' R/W

60' R/W

60' R/W

60' R/W

60' R/W

60' R/W

60' R/W

60' R/W

60' R/W

60' R/W

60' R/W

10' CONTOUR INTERVAL
 FROM USGS QUAD MAP
 5/16/17

MERCER LAND SURVEYING, INC.
 52 NORTH JACKSON STREET
 P.O. BOX 336
 FORSYTH, GEORGIA 31029
 478-894-6695

ATTENTION : THIS PLAT IS COMPRISED OF TWO PAGES ;
 THE TWO PAGES MUST BE UTILIZED TOGETHER.

TOTAL AREA : 81.757 ACRES

A BOUNDARY & PARTITIONING SURVEY OF
MAYNARD MANOR

FOR INGRAM & LEGRAND LUMBER COMPANY

LAND LOTS 8, 25, & 26 : FIFTH LAND DISTRICT
 596th (DILLARD) GEORGIA MILITIA DISTRICT
 MONROE COUNTY, GEORGIA

FIELD SURVEY : 12-(10,13,16,17,20,21,22)-04 & 1-(17,18,19,20,21,24,25)-05
 PLAT PREPARATION : FEBRUARY 3, 2005
 PLAT REVISION : 3-23-06
 SCALE : 1" = 200'

GRAPHIC SCALE
 (IN FEET)
 0 100 200 400 600 800

DR. BY : HWM/CADD PAGE 2 OF 2 PLAT NO. 06-124.2

© COPYRIGHT 2006

V. J. ADAMS, JR. (LOT 6, MAYNARD'S BLUFF SUBDIVISION)

ANGELA G. ADAMS

ANGELA G. ADAMS

ANGELA G. ADAMS