

CURVE DATA				
CURVE	ARC	RADIUS	CENTRAL ANGLE	CHORD
1	321.31'	876.730'	20°59'54"	N 4°56'40" W / 319.52'
2	133.23'	876.730'	8°42'24"	N 8°54'30" E / 133.10'

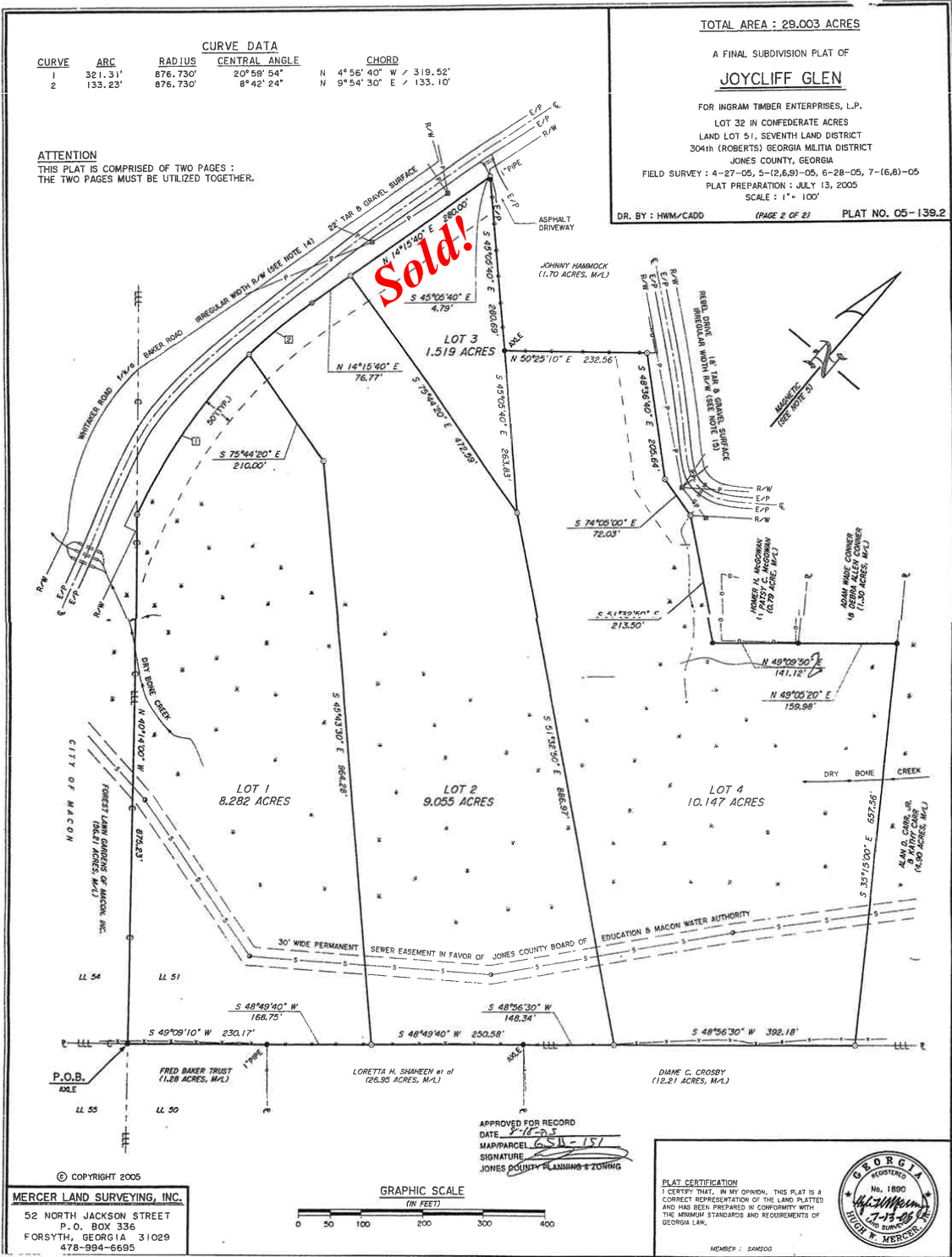
TOTAL AREA : 29.003 ACRES

A FINAL SUBDIVISION PLAT OF  
**JOYCLIFF GLEN**

FOR INGRAM TIMBER ENTERPRISES, L.P.  
LOT 32 IN CONFEDERATE ACRES  
LAND LOT 51, SEVENTH LAND DISTRICT  
304th (ROBERTS) GEORGIA MILITIA DISTRICT  
JONES COUNTY, GEORGIA  
FIELD SURVEY : 4-27-05, 5-(2,6,8)-05, 6-28-05, 7-(6,8)-05  
PLAT PREPARATION : JULY 13, 2005  
SCALE : 1" = 100'

DR. BY : HWM/CADD (PAGE 2 OF 2) PLAT NO. 05-139.2

**ATTENTION**  
THIS PLAT IS COMPRISED OF TWO PAGES :  
THE TWO PAGES MUST BE UTILIZED TOGETHER.



© COPYRIGHT 2005  
**MERCER LAND SURVEYING, INC.**  
52 NORTH JACKSON STREET  
P.O. BOX 336  
FORSYTH, GEORGIA 31029  
478-994-6695



APPROVED FOR RECORD  
DATE: 7/13/05  
MAP/PARCEL: 6511-157  
SIGNATURE: [Signature]  
JONES COUNTY PLANNING & ZONING

PLAT CERTIFICATION  
I CERTIFY THAT, IN MY OPINION, THIS PLAT IS A CORRECT REPRESENTATION OF THE LAND PLATTED AND HAS BEEN PREPARED IN CONFORMITY WITH THE MINIMUM STANDARDS AND REQUIREMENTS OF GEORGIA LAW.

MEMBER : 524200